



LUXURY APARTMENT RESIDENCES IN DAVIE, FLORIDA



Where luxury, comfort, and convenience all live in harmony.

A RICHMAN SIGNATURE PROPERTY





**WELCOME TO PALM RANCH.** Located in Davie, Florida, Palm Ranch is a community that provides nothing but the best for its residents. Whether it is the finest in luxury amenities or the highest level of customer service, this member of the Richman Signature family can always ensure that its residents' needs are met. Finding a home at Palm Ranch is simple with residents having a wide variety of options from which to choose. The six spacious floor plans, varying in size from 730 to over 1,358 square feet, encompass one-, two- and three-bedroom designs all with upgrades such as wood plank or tile floors, expansive kitchen islands with pendant lighting, walk-in closets, full sized washer and dryers and more.

Palm Ranch tailors to every kind of lifestyle. There is something for every resident due to its array of amenities ranging from the 5,400 SF clubhouse featuring a large rotunda, gathering areas, and entertainment options to a resort style pool with waterfall, sun deck and lap lane. Palm Ranch creates its own little community in Davie where residents can enjoy resident events and clubs, play billiards or relax by the fireside lounge.





## COMMUNITY AMENITIES

- 5,400 SF Clubhouse Featuring a Large Rotunda, Gathering Areas, and Entertainment Options
- Club Room with Sports Bar and Billiards
- Fireside Lounge with Coffee Bar
- Media and Gaming Area Featuring a Large 80" Television
- Professional Fitness Center Including LifeFitness Cardio Equipment with 19" Touch Screen Tablet, Internet and Entertainment Options
- Yoga and Spin Studio Featuring On-Demand Fitness Classes
- Private Conference Room
- Resort Pool with Waterfall, Sun Deck and Lap Lane
- Relaxing Whirlpool Spa
- Poolside Cabanas
- Summer Kitchen with BBQ Grills and Seating Area
- Covered Lanai with Entertainment Space
- Fenced Pet Park with Agility Course
- Covered Car Care Center
- Controlled Access Entry
- Complimentary Wi-Fi Hot Spots

## UPGRADED RESIDENCE FEATURES

- Chef-Style Kitchens with Stainless-Steel Appliances, 42" Espresso-Finished Cabinetry, Granite Countertops and Tile Backsplash
- Kitchen Island with Brushed Nickel Pendant Lighting
- USB Charging Stations in All Kitchens
- Wood Plank or Ceramic Tile Floors
- 9' Ceilings Throughout
- Brushed Nickel Designer Hardware
- Decorative Lighting and Ceiling Fans in Living and Bedrooms
- Elegant Bathrooms Featuring Granite Countertops and Glass Showers and/or Soaking Tubs
- Double Sink Vanities in Two and Three Bedroom Master Baths and Select One Bedroom Baths
- Full-size Washer and Dryer in Every Home
- Large Walk-in Closets
- Private Balconies and Patios
- Water Views in Select Homes
- Detached Garages & Private Storage Areas Available





**ARECA** 730 Total sq. ft.

Date Available: \_\_\_\_\_

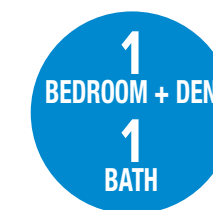
Quote: \_\_\_\_\_



**ARMATA** 763 Total sq. ft.

Date Available: \_\_\_\_\_

Quote: \_\_\_\_\_



**EMPRESS** 861 Total sq. ft.

Date Available: \_\_\_\_\_

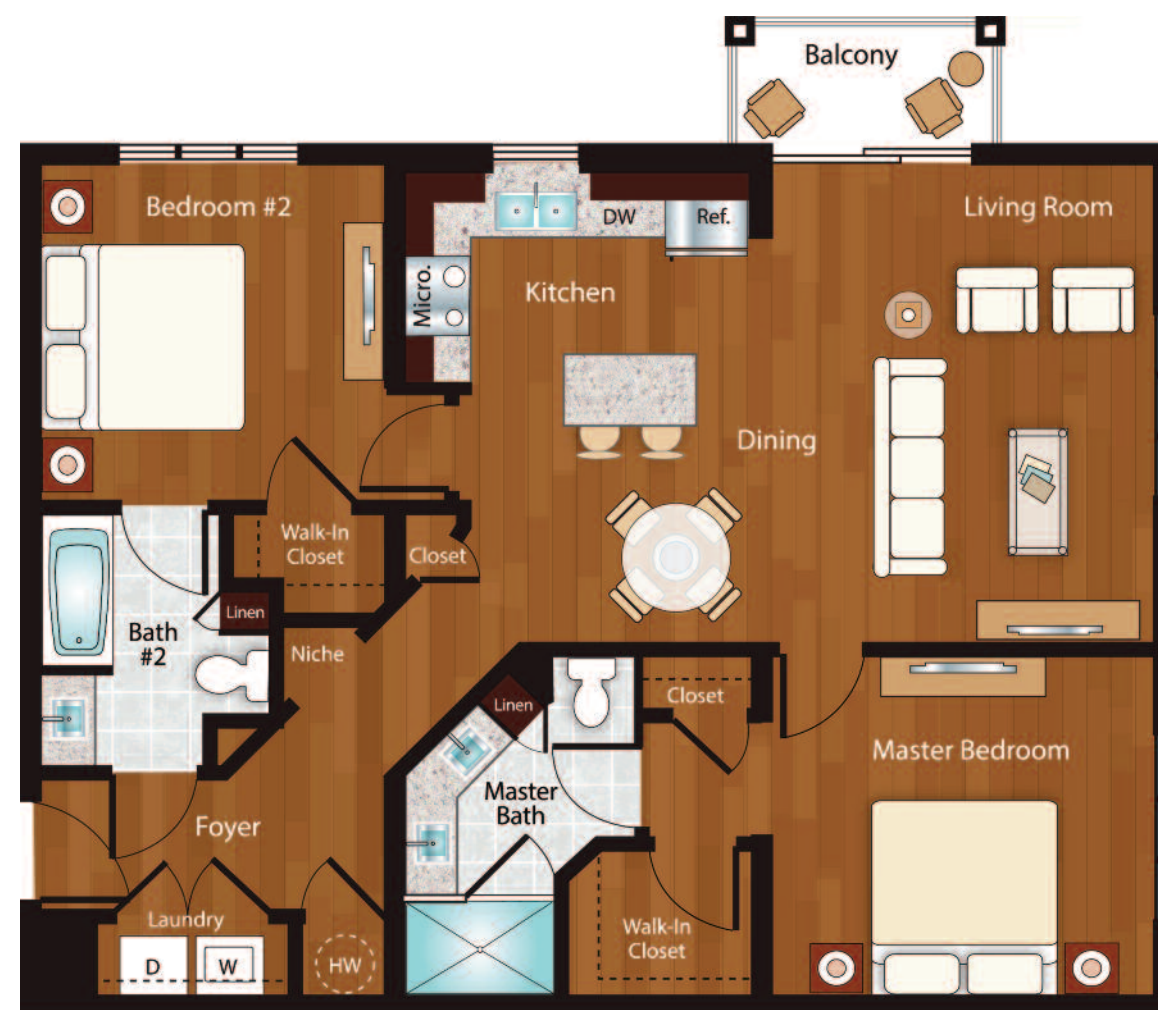
Quote: \_\_\_\_\_



**PALMETTO** 1,100 Total sq. ft.

Date Available: \_\_\_\_\_

Quote: \_\_\_\_\_



**BISMARCK** 1,168 Total sq. ft.

Date Available: \_\_\_\_\_

Quote: \_\_\_\_\_



**SABAL** 1,358 Total sq. ft.

Date Available: \_\_\_\_\_

Quote: \_\_\_\_\_





SERVICE IS OUR SIGNATURE.

**Palm Ranch is part of the Richman Signature family of luxury apartment communities.**

At Richman Signature, we pride ourselves on providing remarkable living experiences to each and every one of our residents. For our teams this isn't just a goal, it's a promise.

Our portfolio of properties are found in dynamic locations offering the best of city living and small town comforts while providing amenities designed with the resident in mind. We ask ourselves, what can make busy lives easier and more enjoyable - then we create those services and amenities to do just that. However, offering beautiful, amenity-rich properties is only part of the story.

At each of our properties, every employee from our property managers and leasing agents to our maintenance teams and landscape crews is dedicated to putting the resident first. Providing superior first-class service is paramount. With programs in place like our 24/7 Emergency Maintenance Service, 30-day Love It Promise and our Resident for Life Benefits, Richman Signature is committed to making apartment living a remarkable experience every step of the way.

**Here, service is our signature.**



7025 Stirling Road, Davie, Florida 33314 | (877) 378-1841  
PalmRanchDavie.com | Leasing@PalmRanchDavie.com

